



IN CLINIC

Binding Aesthetics and Science

NOON Aesthetics™ - In-Clinic Catalog

IN-CLINIC Products Catalog / Table of Contents



NOON Aesthetics Ltd.	4	Peeling Steps	21
THE INNOVATION: DermShield™	6	S-Peel 20	22
The Training	7	J-Peel Delicate	22
Our Product Line	8	WARMING SOFTENING GEL	
CLEANSERS		Thermo Gel	23
C-Cleanser Foam	10	AMPOULES	
Cosmo Clear	11	Lift & Whitening Peptide Complex	24
Micro-Soft	12	HydroCalming & Vit Complex	26
PEELS	14	AcNo Complex	27
High-strength Therapeutic Cosmetics	15	MASKS	
DermShield™ and Chemical peels	16	Igloo Mask	28
What is Peel?	17	TrioLift Mask	29
Chemeical Peel		MediClay Mask	30
Pre-Peel	18	CABINETS	
Peel Neutralizer	16	Lacto-10	31
G-Peel 50	19	LactoCeramide-15	32
G-Peel 50 Nanoconstructed	19	Intensive Hydrogel	33
P-Peel 20 / 40	20	Igloo moist 24/7	34



DermShield™ - High Concentration, No Irritation

About NOON Aesthetics Ltd.

“**NOON**” is an ancient philosophical principle describing the “primordial waters” that are believed to constitute the source of all that exists in the world and the potential inherent goodness in all. This belief is the core of our business, radiating throughout all of our company’s products, technology, processes, partners and more.

Subsequently, at NOON Aesthetics™ - Professional Skin Care, we believe that quality, excellence and professionalism - combined with the industry’s leading innovation and technology - lead to impressive results and excellent skin conditions. With this in mind, we successfully develop and manufacture unique and efficient aesthetics products for skin care - all while ensuring the highest quality throughout the entire process. We offer only the best results for professionals and their patients, alike.

What sets NOON Aesthetics’ products apart is the ability to offer the most effective skin treatment without common side effects, such as irritation, burning, redness and unpleasant sensation. This is due to the additive **DermShield™**, which further enables NOON Aesthetics to develop a paraceutical skin care product line that contains active ingredients at breakthrough high concentration levels. In this context, we triumphantly provide innovative solutions and impressive results for various skin problems, such as skin aging, hyper-pigmentation, sun damage and loss of elasticity, blemishes, seborrhea, and more - without the typical aftermath.

The use of such components comprised of certified top-quality ingredients and an uncompromising adherence to precise concentrations, further enables the company’s clients to enjoy the most promising results available today in the field of skincare. NOON products can only be utilized by a trained professional or under their guidance.



THE INNOVATION: DermShield™ - High Concentration, No Irritation

We believe that everyone deserve a beautiful skin. Therefore we developed our unique DermShield technology that enables us to manufacture the world's best and most effective skin care products.

Our innovative **DermShield™** technology enables NOON Aesthetics™ to develop a paraceutical skin care product line that contains active ingredients at breakthrough high concentration levels without the common side effects, such as irritation, burning, redness and unpleasant sensation.

We provide impressive results for aging skin, hyperpigmentation, sun damage and loss of elasticity, blemishes, acne, seborrhea and other skin concerns.

THE TRAINING

NOON Aesthetics offers in-person training to ensure our professional partners and their staff are fully versed in the NOON Aesthetics home use and in clinic product assortment and our unique technology DermShield™. Our ongoing and advanced educational Modular Training System (MTS) assists our partners to master treatment techniques and truly understand skin conditions.

A typical NOON Aesthetics training session may include:

- Chemical Peel Certification training
- The treatment of Aging, Hyperpigmentation, Acne, Sensitive skin
- NOON professional skin care products review, in-clinic treatment protocols and daily regimens, suitable for up to 20 skin conditions
- Hands-on practice
- Best practices for successful business development, based on sales through professional knowledge





OUR PRODUCT LINE

NOON's product line includes over 40 professional skin care products for use in clinics and for follow up treatment at home.

NOON's products fall into the following categories:

PARACEUTICAL

Products with a therapeutic effect, developed to provide potent and effective treatment for various skin conditions. Products in this category include high concentrations of active ingredients, yet without the typical side effects, such as irritation, burning, redness and unpleasant sensation during use.

ESSENTIAL

Support and retention products with a therapeutic effect that assist and protect the skin from harmful substances that contributes to the appearance of damaged skin, such as air pollution, exposure to sun and UVA & UVB rays, stress, unbalanced diet etc. These products lead to the appearance of a radiant, essential and healthy facial skin.

IN CLINIC

Professional products for in-clinic treatments, such as peels, ampoules and masks.

NOON IN-CLINIC Products

IN CLINIC

CLEANSERS

- C-Cleanser Foam
- Cosmo Clear
- Micro-Soft

PEELS

- Pre-Peel Conditioner
- Peel Neutralizer
- G-Peel 50
- G-Peel 50 Nanoconstructed Thixotropic Gel
- P-Peel 20 / 40 Nanoconstructed Thixotropic Gel
- S-Peel 20
- J-Peel Delicate

CABINETS

- Lacto-10
- LactoCeramide-15
- Intensive Hydrogel
- Igloo moist 24/7

WARMING SOFTENING GEL

- Thermo Gel

AMPOULES

- Lift & Whitening Peptide Complex
- AcNo Complex
- HydroCalming & Vit Complex

MASKS

- Igloo Mask
- MediClay Mask
- TrioLift Mask



CLEANSERS

C-Cleanser Foam

ESSENTIAL



A deep cleansing formula, **C-Cleanser Foam** removes excess oils and clears surface impurities for pure, soft and supple skin.

The active ingredients used in C-Cleanser Foam:

- **Ascorbyl Tetraisopalmitate** - an Oil-Soluble Vitamin C Derivative. Works as a powerful antioxidant and whitening agent, with both anti-acne and anti-aging capabilities.
- **Medxtract Chamomile Distilled** - the floral water of flowers of Chamomilla Recutita, produced by distillation. It is a gentle soothing hydrosol used to refresh and calm the skin.

Micro-Soft

ESSENTIAL



Micro-Soft is a very soft cleanser formulated specifically to protect dry skin. This cleanser does not contain SLS and does not foam at all. It was formulated to truly guard the natural oils of the upper skin. It's a unique crystal clear and very gentle microemulsion containing both water and oil in a single phase, easily rinses off without oily residue, leaving a very soft sensation. The advanced micro-emulsion formula is the most efficient in removing long-wear make-up, and Micro-soft poses a very safe and highly recommended cleanser for the eye area.

Active ingredients:

- **Lavandula Angustifolia Flower Water** - Lavender water is known to calm and balance the skin
- **Macadamia Ternifolia Seed Oil (Organic)** - rich in palmitoleic acid that is essential for healthy skin function and is an excellent moisturizer that provides a silky feeling
- **Squalene** - 100% plant-based emollient derived from plant sugars that prevents moisture loss while restoring the skin's elasticity and flexibility
- **Bambusa Vulgaris Shoot Extract, Nelumbo Nucifera Extract, Nymphaea Alba Root Extract** – a synergistic complex of three extracts: White Lotus, Indian Lotus, and Bamboo, to provide optimal skin nutrition and for decreasing erythema (soothing activity)

CLEANSERS

Cosmo Clear

ESSENTIAL



CosmoClear is a purifying gel cleanser containing alpha and beta hydroxy acids. Formulated with pH 4.0, it is especially recommended to control acne-prone skin types. Lowering the pH levels also prepares the skin and strengthens the effect of other acid products. CosmoClear has excellent cleansing and degreasing properties and is mild to the skin thanks to a complex of moisturizing components and Chamomile. **DermShield™** helps to protect sensitive skin from the usual irritation caused by acids.

Active ingredients:

- **AHAs (Glycolic acid, Lactic acid)** - Control the pH levels of the skin and help in rejuvenation
- **Gaultheria Procumbens (Wintergreen) leaf extract** - natural
- **BHA (Salicylic Acid)** – anti-inflammatory, antibacterial, keratolytic
- **Sodium PCA, Sodium Lactate, Amino Acids** - A highly effective moisturizer complex with NMF components (Natural Moisturizing Factor)
- **Chamomilla Recutita Flower Water** - Relieves irritated skin and redness and Provides hydration and balance to dry skin





High-strength Therapeutic Cosmetics

Maximizing the abilities of AHA:

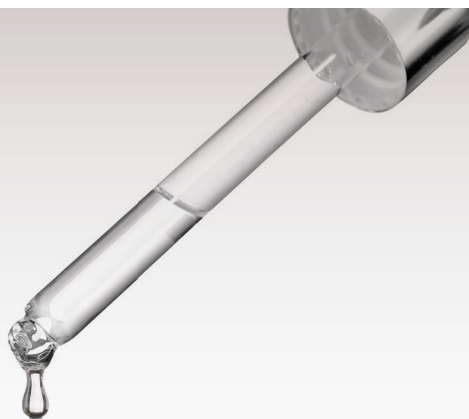
- High acid concentration
- Low pH

Acid side effects limit the use of acid peels and creams

1. Itching, stinging
2. Erythema
3. Edema

How do cosmetics companies cope with the irritation problem?

- By lowering the acid concentration to a minimal level
- Acid reduction (high pH)



DermShield™ - High Concentration, No Irritation

Pharmacological activity:

- Selectively suppresses tingling, burning and itching;
- Without any sense of local anesthesia in the treated area;
- Suppresses Erythema & Edema of the skin;
- Prevents neurogenic inflammation (neuralgia);
- Suppresses cytokine formation in keratinocytes (responsible for initiation of inflammation): TNF α , IL-1 α , IL-6.

DermShield™ and Chemical peels:

When chemical irritants such as Azelaic acid or alpha hydroxy acids that are included in high concentrations in peeling and many skin care products contact the skin, nerve fibers called type c nociceptors are activated. As a result neurogenic inflammation is formed - blood vessels dilate, causing erythema - redness and edema - accumulation of fluid in the interstitium. Mast cells are also activated, releasing histamine. The nerve impulse continues to the brain causing sensation of sting, burn & itch.

When peeling and skin care products that include **DermShield™** are used, activation of type c nociceptors is reduced. Neurogenic inflammation and other side effects are avoided. The nerve impulse to the brain is decreased and the sensation of sting, burn & itch is significantly reduced.





What Is Peel?

A Peel is a treatment meant to remove the outermost layer of the skin, resulting in Basal layer higher mitosis rate and epidermal regeneration.
Based on the skin's natural ability for regeneration

Types of Peels

Defining peels by Operation mechanism and Depths of activity Operation mechanism:

- Mechanical
- Chemical
- Lasers Peel

Depths of activity for chemical peels:

- Superficial peels (AHA's, BHA's, Pyruvic Acid, Jessner Solution)
- Medium peels: 30%-40% TCA
- Deep peels: 88% Phenol

Chemical Peel

Superficial Peel

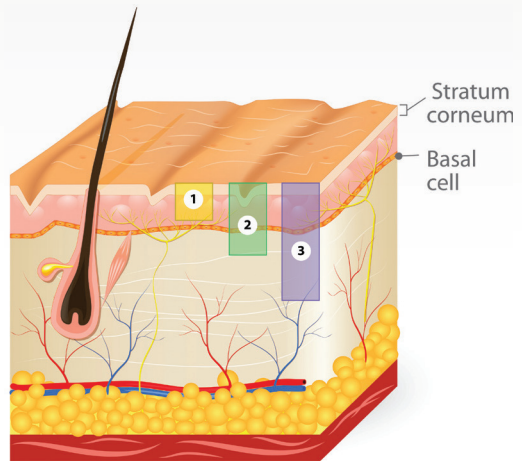
AHA (Glycolic Acid)
BHA (Salicylic Acid)
Pyruvic Acid

Medium Peel

TCA

Deep Peel

Phenol



Superficial Chemical Peel

Peel:

- 40% Pyruvic Acid (multi- layer / application time)
- 20-30% Salicylic Acid (multi- layer)
- Jessner Solution:
 - Lactic Acid
 - Salicylic Acid
 - Resorcinol

Exfoliation:

- Alpha Hydroxy Acids:
 - Glycolic Acid
 - Lactic Acid
- 20% Pyruvic Acid (one layer)
- 20% Salicylic Acid (one layer)

What affects the strength of superficial chemical peels?

All Peels (excluding AHA):

- Concentration
- pH
- Time of application
- ml applied

Alpha - Hydroxy Acids:

- Concentration
- pH
- Time of application

PEELS



Pre-Peel Conditioner

IN CLINIC

Prepare the Skin for Peeling, Filler and Laser Treatment

200 mL E.

Pre-Peel Conditioner is used to prepare the skin for any treatment as peeling, filler and laser.

It prepares the skin for peeling treatments by degreasing the skin, helping to the peel agents to evenly spread and penetrate. The Pre-Peel Conditioner contains the anti-irritant **DermShield™**.



Peel Neutralizer

IN CLINIC

Fast Acting, Refreshing and Soothing Solution to Neutralize Remaining Acids

200 mL E.

Peel Neutralizer is a fast acting, refreshing and soothing solution used to neutralize any remaining acids which may be left on the skin after application of a chemical peel.

It allows control of the depth of the peel and ensure that the acid on the skin stops working after completion of treatment. Peel Neutralizer contains anti-irritant **DermShield™**.





G-Peel 50

IN CLINIC

Skin Exfoliating Solution
50% Glycolic Acid
with DermShield™
 pH<1
 50 mL / 1.69 FL Oz E.

G-Peel 50 reduces fine lines, wrinkles, sun damage and hyper-pigmentation. It helps reduce uneven skin texture in cases of oily /problematic skin. It affects the epidermis and dermis, decreases the convergence of epidermal corneocytes and prevents the thickening of the corneal layer. G-Peel 50 exfoliates the skin and stimulates dermal collagen and glycosaminoglycan synthesis.

The G-Peel 50 formula contains 50% Glycolic Acid and the clinically proven anti-irritant **DermShield™**.



G-Peel 50 Nanoconstructed Gel

IN CLINIC

Nanoconstructed Thixotropic Gel
50% Glycolic Acid
with DermShield™
For Professional Use In Clinic Only
 pH<1
 50 gr / 1.76 Oz E.

G-Peel 50 reduces fine lines, wrinkles, sun damage and hyper-pigmentation. It helps reduce uneven skin texture in cases of oily / problematic skin. It affects the epidermis and dermis, decreases the convergence of epidermal corneocytes and prevents the thickening of the corneal layer. G-Peel 50 exfoliates the skin and stimulates dermal collagen and glycosaminoglycan synthesis.

The G-Peel 50 formula contains 50% Glycolic Acid and the clinically proven anti-irritant **DermShield™**. This formula includes the nano-constructed inorganic matrix which creates a thixotropic gel. The use of nano-constructed material significantly increases the peeling effect, allowing the use of lower concentrations of peel agent.

PEELS

P-Peel 20 / 40 - 20% / 40% Pyruvic acid

IN CLINIC



Nanoconstructed Thixotropic Gel
20% / 40% Pyruvic Acid
with **DermShield™**
For Professional Use In Clinic Only
pH<1
50 gr / 1.76 Oz E.

- Pyruvic acid is a small dimension Alpha-Keto-Acid that penetrates rapidly and deeply through the skin and is considered a potent chemical agent, but a non-toxic agent in all cases. Good for darker skin types and ethnic skin.
- Use mostly on face, can also be used on the chest area.
- Use for acne, folliculitis, mild photodamage with superficial wrinkles, superficial scarring and mottled pigmentation.
- Acne patients – also use on the back, chest and shoulders (all together in the same session) .
- 1-15 minutes applications (before neutralization).
- Add layers (only in Fitzpatrick 1-2) during the 15 minute peel session.
- Suitable as a single treatment or in a consecutive peel series.
- In a single treatment, do not mix with other peels.
- Use 40% formula in lighter skin types (Fitzpatrick 1-2).
- Always use a FAN during the peel session! Pyruvic Acid vapor may irritate the airways and the eyes. The patient has to refrain from opening the eyes during the procedure. The peel has a distinctive scent, it is better to tell the patient prior to use.

Step
1



Pre Peel Conditioner

Step
2



G-Peel-50



OR
G-Peel-5
Nanoconstructed Gel



OR
P-Peel-20,
P-Peel-40
Nanoconstructed Gel

Step
3



PEELS



S-Peel 20

IN CLINIC

Skin Exfoliating Solution
20% Salicylic Acid
with DermShield™
pH<1
50 mL / 1.69 Fl Oz E.

S-Peel 20 reduces fine lines, wrinkles and sun damage and has keratolytic, sebum regulating, and anti-microbial effects. It successfully provides treatment for Bumpy Skin with Papulas and associated Redness (Rosacea). The S-Peel 20 formula contains 20% Salicylic Acid and the clinically proven anti-irritant **DermShield™**.



S- 20 - 20% Salicylic Acid

J-Peel Delicate - 14% Salicylic, 14% Lactic, 12% Citric

- Salicylic Acid is a lipophilic Beta-Hydroxyl Acid, that has keratolytic and comedolytic effects.
- Can be used in combination with other peels.
Use for acne, both inflammatory or post-inflammatory.
- Use on photodamaged skin, Lentigo, Seborrhea in oily skin.
- Use carefully in darker skin patients.
- Acne patients – also use on the back, shoulders or chest (one area only!)
- Do not neutralize.
- Add layers every 2-3 minutes, up to 6 layers
(in Fitzpatrick 1-3 only!)
- Suitable as a single treatment or in a consecutive peel series.

WARMING SOFTENING GEL



Thermo Gel

IN CLINIC

Warming Softening Gel

250 ml / 8.45 fl Oz

Thermo Gel produces a warming effect that facilitates deep cleaning. It is suitable for all skin types.

AMPOULES

Lift & Whitening Peptide Complex

ESSENTIAL

Lift & Whitening Peptide Complex is an effective and highly concentrated blend of peptides used to achieve a noticeable effect in skin firmness and whitening.

- Benefits of Lift & Whitening Peptide Complex:
- Activates multiple rebuilding pathways in the dermis
- Significantly reduces wrinkles' depth
- Improves the skin's moisture levels and turgor
- Enhances the skin's nutrition levels and elasticity
- Provides skin whitening effect

The active ingredients in Lift & Whitening Peptide Complex:

Palmitoyl Tripeptide-38 (Matrixyl Synthe'6™) - This formula contains an extremely high concentration of Matrixyl Synthe'6 and is considered a firming booster. A Matrikine Mimetic Peptide that stimulates wrinkle filling by synthesis of 6 major structural components of the dermis. Provides building material by stimulating the synthesis of six major molecules - Hyaluronic Acid, collagen I, III and IV, laminins and fibronectin, significantly firming the skin and filling wrinkles.

Cyclotetrapeptide-24 Aminocyclohexane Carboxylate – a unique cyclic structure that counteracts wrinkles and fine lines. Its unique design as an intelligent and selective peptide mimics the natural processes of skin communication and repair.

Oligopeptide-68 – innovative and unique whitening agent that reduces the appearance of dark spots and skin discoloration.

Swertia Chirata Extract - an ingredient made from Indian Gentian leaves. Activates adipose-derived stem cells, promotes the production of keratinocyte growth factors, capable of stimulating keratinocyte proliferation to self-regenerate thin epidermis and to improve the look of wrinkled skin. Provides improvement in the appearance of vertical wrinkles and a reduction in the appearance of lip contour wrinkles.

Sodium Hyaluronate – a high molecular weight Hyaluronic Acid with very high purity that provides deep hydration. Sodium Hyaluronate's strong hygroscopic properties allow for retention of water at the surface of the skin, playing the role of water reservoir.

Sodium PCA – a natural component of NMF (Natural Moisturizing Factor). Sodium PCA is extremely water absorbent and can hold several times its weight in water, thus helping to reduce loss of moisture through evaporation (trans epidermal water loss).



AMPOULES

HydroCalming & Vit Complex

PARACEUTICAL

HydroCalming & Vit Complex is a concentrated and effective blend of effective moisturizing factors, herbal extracts and vitamins.

Benefits of HydroCalming & Vit Complex:

- Improves the skin's moisture levels
- Increases the skin's turgor
- Nourishes the skin with essential vitamins
- Moisturises and calms the skin during a peel series

The active ingredients in HydroCalming & Vit Complex:

Sodium Hyaluronate – a high molecular weight Hyaluronic Acid with very high purity that provides deep hydration. Sodium Hyaluronate's strong hygroscopic properties allow for retention of water at the surface of the skin, playing the role of water reservoir.

Alteromonas Ferment Extract – an excellent hydrating agent. Alteromonas Ferment Extract restores Hyaluronic Acid secretion in aged skin cells, stimulates lipid synthesis, supports the dermo-epidermal junction and induces filaggrin expression in the skin.

Aphanizomenon Flos-aquae Extract – a fresh water unicellular blue-green algae (cyanophyta) rich in phycocyanin (PC), a photosynthetic pigment with anti-oxidant and anti-inflammatory properties.that acts like a natural retinoid, smoothing the skin without unwanted side effects. It helps maintain skin hydration and liberates natural moisturising factors.



AcNo Complex

PARACEUTICAL

AcNo Complex is a concentrated and effective mixture of anti-inflammatory agents, used to treat irritated and problematic skin and to regulate casual sebum production.

Benefits of AcNo Complex:

- Decreases redness and blemishes
- Reduces sebum production
- Decreases bacterial proliferation
- Hydrates, soothes and improves the skin's moisture level

The active ingredients used in AcNo Complex:

Niacinamide - an ingredient that significantly reduces sebum excretion and has potent anti-inflammatory and anti-bacterial properties.

Dipotassium Glycyrrhizate - an anti inflammatory agent isolated from licorice root. Studies have shown it to help reduce the redness and irritation commonly associated with various skin conditions such as Acne, Rosacea, Psoriasis and some types of Dermatitis.

Oligopeptide-10 - A patented antimicrobial peptide that Exhibits excellent activity against the P. acne bacterium, and can replace antibiotics in long term acne treatment.

Botanical Extract's Complex (Oryza Sativa Bran Extract, Bosswellia Serrata Extract) - Fights Inflammation.

Sodium PCA - a natural component of NMF (Natural Moisturizing Factor) - A hydrating agent



MASKS

Igloo Mask

ESSENTIAL



Igloo Mask soothes, hydrates and cools the skin, providing a long lasting freshness effect. It tightens and restores damaged skin for a smooth and youthful look.

The active ingredients used in Igloo Mask:

- **MET & Menthyl PCA & Lactamide MEA** - a combination of cooling ingredients that activates TRMP8 receptors and induce a cooling sensation.
- **Xylitol** – a 3D Hydration Hydraconcept, Hyaluronic Acid booster.
- **Arnica Montana Flower Extract** – has a great soothing effect and tremendous healing properties.
- **Coffee Arabica (Coffee) Seed Extract** - promotes blood circulation and leads to healthy and energised skin, effectively reducing the swelling of tissues and de-puffing areas of the skin.

TrioLift Mask

ESSENTIAL



TrioLift Mask is an advanced anti-aging formula that immediately lifts the skin. It provides a quick anti-wrinkle effect, while hydrating, smoothing and soothing the skin. **Younger looking skin only 5 minutes after application!**

The active ingredients used in TrioLift Mask:

- **Acetyl Dipeptide -1 Cetyl Ester** – a “peptide of gentleness”, it is the first cosmetic active ingredient that acts as a switch messenger for gentleness and comfort. It stimulates the release of pro-endorphins, providing an exhilarating effect on the skin, and inhibits muscle contractions responsible for the appearance of expression wrinkles.
- **Hydrolysed Sesam Protein PG** – propyl methylsilanediol – a new generation smoothing agent. Thanks to the incorporation of the new “tightening” agent the skin is smoothed and lifted in a blink of an eye. More than simply a tightening agent with an immediate action, this agent also provides the skin with real hydration.
- **Allantoin** – an active skin protector. Naturally encourages the skins healing process.
- **Shea Butter** – concentration of natural vitamins and fatty acids that makes it incredibly nourishing and moisturizing for skin.

MASKS

MediClay Mask

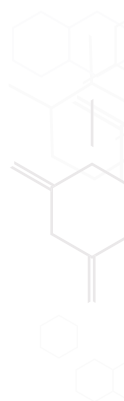
ESSENTIAL



MediClay Mask is a purifying mask for treatment of oily/problematic skin. MediClay Mask disinfects, soothes redness, fights “break outs” and reduces bacterial proliferation.

The active ingredients used in MediClay Mask:

- **Oleanolic Acid**- A powerful inhibitor of cellular inflammatory processes and is a major protector of cells against oxidative stress. It inhibits 5- α reductase to fight hyperseborrhoea and to reduce testosterone influence on acne prone skin.
- **Nordihydroguaiaretic Acid (NDGA)** - a cell growth regulator that inhibits hyperkeratosis and inflammation. It helps to control bacterial growth.
- **Propolis Extract** - speeds up the wound healing process due to its antibacterial and Anti-inflammatory properties.
- **Salvia Officinalis Extract** - prevents the occurrence of skin infections.
- **Allantoin** - smoothes and heals the imperfections.
- **Eucalyptus Leaf Oil** - treats skin infections.
- **Sulfur** - kills bacteria and draws out oil, which in turn reduces build-up in pores.



CABINETS



Lacto-10

PARACETICAL

10% Lactic Acid for Intensive Rejuvenating & Hydrating Treatment

200 mL E.

Lacto-10 is a one-of-a-kind cream that hastens skin rejuvenation, while refining skin texture and improving its hue and moisture levels. The additive **DermShield™** with **10% Lactic Acid (pH 3.5)**, allows the use of the cream with all skin types, throughout the seasons, and without the typical irritations usually associated with the use of **Alpha Hydroxy Acids (AHA)**. Oil-free, easily absorbed and perfect for all skin types.

Lacto-10:

- Inhibits the formation of wrinkles and fine lines
- Stimulates cell exfoliation and epidermal turnover
- Repairs photo-damage and prevents its accumulation
- Increases skin density and elasticity
- Helps fight discoloration and hyperpigmentation
- Uniquely safe for use all around the eye area
- Harmonizes nicely with other cosmetic preparations or medical ointments

CABINETS



LactoCeramide-15

PARACEUTICAL

15% Lactic Acid and Ceramide types 2,3,6 for a highly effective anti-aging treatment

200 mL E

LactoCeramide-15 is a particularly active anti-aging treatment that is based on a combination of **15% Lactic Acid** and Ceramide types 2,3,6. The effective combination of **AHA** and **DermShield™**, allows the use of the cream with all skin types, throughout the seasons, and without causing irritation.

- **Lactic Acid** stimulates and rejuvenates the skin, providing significant improvement in skin texture and moisture level. It further reduces blemishes and increases skin density and elasticity.
- **Ceramides 2,3,6** constitute a perfect copy of the lipids found in the upper layer of the skin and thus help to rectify defects in the Stratum Corneum, forming a healthy layer resistant to damage.

LactoCeramide-15:

- Stimulates skin rejuvenation
- Significantly reduces the appearance of fine lines and wrinkles
- Improves water retention and barrier function of the epidermis
- Increases skin density and elasticity
- Blurs spots and inhibits the development of hyperpigmentation
- Harmonizes nicely with other cosmetic preparations or medical ointment



Intensive Hydrogel

PARACEUTICAL

10% Lactic Acid and 2% Salicylic Acid for oily/combination skin treatment

200 mL E

Intensive Hydrogel is a light balancing emulsion, consisting of **10% Lactic Acid (AHA)** combined with **2% Salicylic Acid (BHA)** and **DermShield™**. It improves the quality of oily/combination skin and provides an intensive treatment, without causing irritations, thanks to the use of **DermShield™**. Intensive Hydrogel has powerful antimicrobial and anti-inflammatory properties, to purify and soothe oily skin.

100% Natural and Eco-responsible Salicylic Acid for the first time in cosmetics! Salicylic Acid is A BHA and an excellent agent for cell exfoliation, with oil balancing and anti-bacterial properties. This formula contains an upgraded, pure and 100% natural ingredient.

Intensive Hydrogel:

- Rejuvenates, lightens and smooths the skin
- Removes greasy appearance and moisturizes perfectly
- Purifies the skin and smooths out blemishes
- For a bright, smooth and radiant look
- Harmonizes nicely with other cosmetic preparations or medical ointment

CABINETS



Igloo Moist 24/7

ESSENTIAL

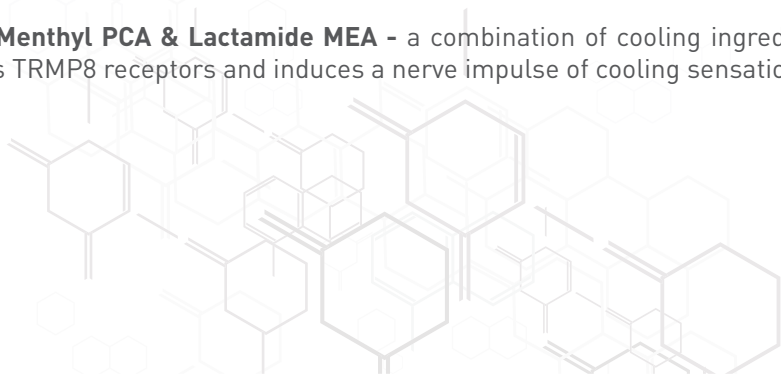
**High-Performance Cream for Hydrating / Cooling / Soothing
Improving Skin Flexibility**

200 mL E.

Igloo Moist 24/7 provides calming and anti-inflammatory abilities through a combination of powerful soothing agents. It is suitable to use day and night as a universal light moisturizer, and is ideal for sensitive or irritated skin. Based on an advanced cooling technology, the cream produces a soothing and cooling effect, while moisturizing and calming the skin, improving elasticity and firmness, and delaying the appearance of aging signs. **Igloo Moist 24/7** is also excellent for supporting and moisturizing problematic skin. It is suitable for all age groups.

The active ingredients used in Igloo Moist 24/7:

- **Avena sativa (Oat) Extract** - Avena sativa can soothe, smooth, and nourish the skin. Oat Extract is recommended for all skin types, and especially for sensitive skin and for dry and flaky skin.
- **Palmitoyl Tetrapeptide 7** - an effective peptide that enables better tolerance of the skin to sun exposure, pollution and chemical irritants, by regulating baseline secretion of IL-6 (Interleukin-6), a cytokine that affects inflammation, regulates cell growth, gene activation, proliferation and survival. IL-6 is linked to natural aging and aging induced by UV (photodamage). Thus, Palmitoyl Tetrapeptide 7 also protects the skin against premature aging and slows its effects.
- **Sodium Hyaluronate** - hyaluronic acid with very high purity that provides deep hydration. Sodium Hyaluronate's strong hygroscopic properties allow for retention of water, playing the role of water reservoir.
- **MET & Menthyl PCA & Lactamide MEA** - a combination of cooling ingredients that activates TRMP8 receptors and induces a nerve impulse of cooling sensation.







The products are developed by Noon Aesthetics Ltd.
NOON Aesthetics. Binding Aesthetics & Science